

FullLand[®]

TURNING MILLING AND PRECISION

CNC

HEAVY DUTY LATHES



FUL-1000 series

Welcome to a new world of convenience and precision with the FullLand Lathe now with auto-cycling

To meet market demands, FullLand increases manpower and relative equipment to research and to develop the completer range of products. With thousands of FullLand customers around the world enjoying the benefits of increased productivity and unrivaled ease of use the new FullLand lathe has been developed with auto-cycling to further increase your productivity.

The versatility of the FullLand Lathe means it is equally at home performing manual, sequential, semi or fully automatic cycle operations. One-offs, small batch runs or longer runs-the FullLand Lathe can handle them all with ease.

Guarded to meet CE requirements without restricting access, the FullLand Lathe is the result of intensive worldwide development spear-headed by a skilled research team dedicated to bringing practicality, versatility and exceptional ease of use to the workshop.



Production Line



Product Inspection

All machines are measured by laser equipment to attain high positioning and repeated accuracy whpt backlash compensation.



3 MACHINES IN 1

Complete versatility of the standard centre lathe is experienced with the FullLand lathe. Large size electronic hand wheels (X & Z Axes) with digital positioning display at the control console provides the accuracy and repeatability demanded by toolroom applications.



Fast Manual with D.R.O.

Programmed sequential operations in simple question / answer page format the machine mounted control console for parallel turning, chamfer, radius, taper and multistart threads. Constant surface speed is a standard feature. Ideally suited for one off and small batch production.



Semi Automatic

Simple to complex profiles can be generated directly in the CNC with ease, and converted into CNC program. The components is produced form automatic cycles and setting time is further reduced. 1 off, small and medium batch production is fully utilized.



Fully Programmable CNC

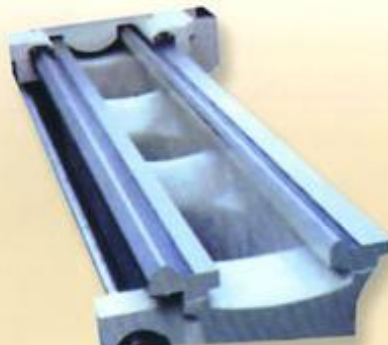
CNC Heavy Duty Lathe

FUL-510

	FUL-510
SWING OVER BED	510mm (20")
CENTER HEIGHT	255mm (10")
SWING OVER CROSS SLIDE	292mm (11.6")
DISTANCE BETWEEN CENTERS	1000/1500/2000mm
WIDTH OF BED	330mm (13")
SPINDLE SPEEDS	30-2000 rpm
SPINDLE NOSE	D1-8 (85mm)
SPINDLE MOTOR	11KW (15HP)



D1-8 (85mm, 3 3/8")



Hardened & Ground Ways

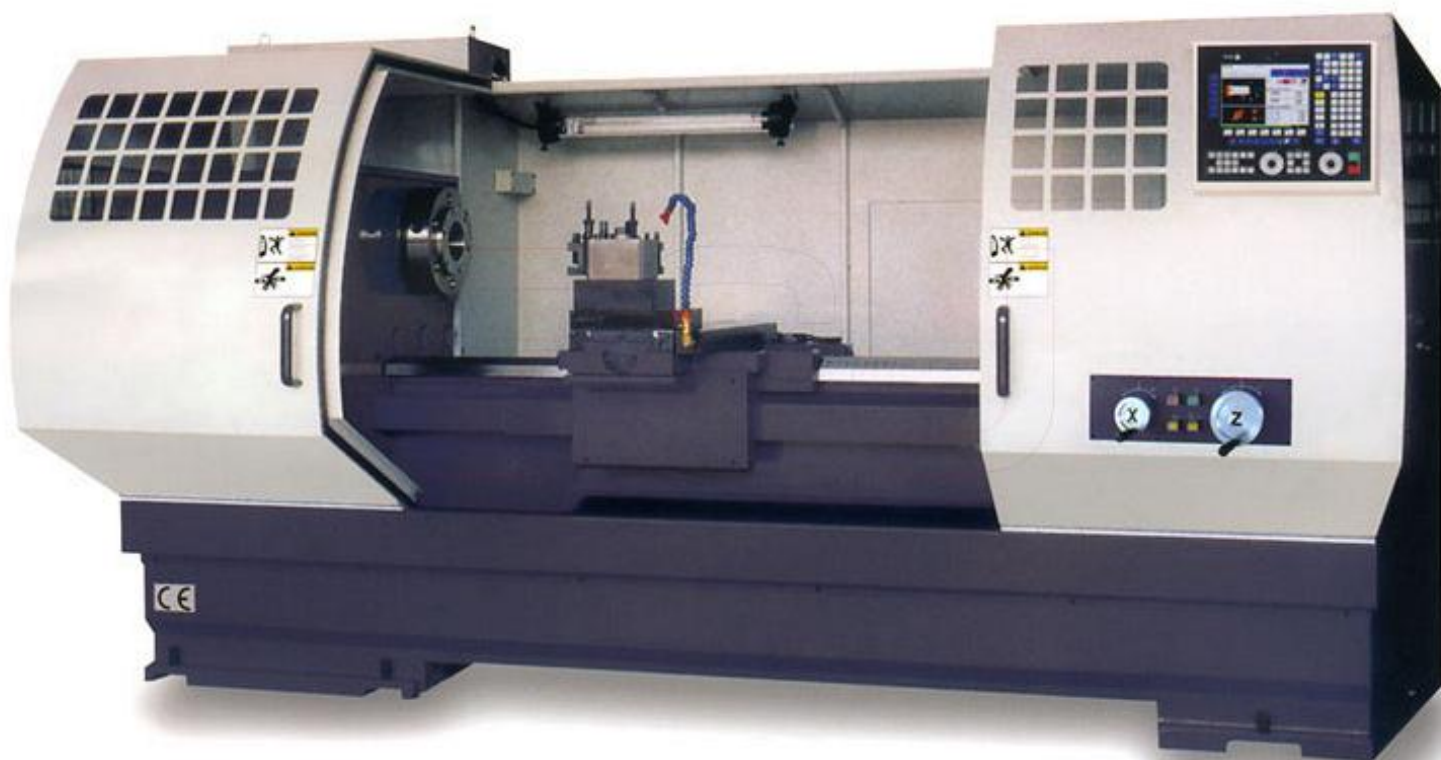


Heavy Duty Headstock

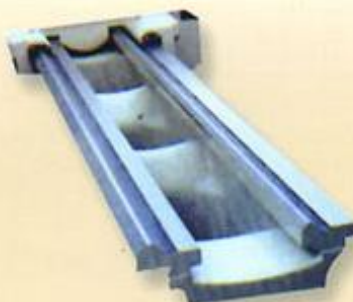
CNC Heavy Duty Lathe

FUL-760

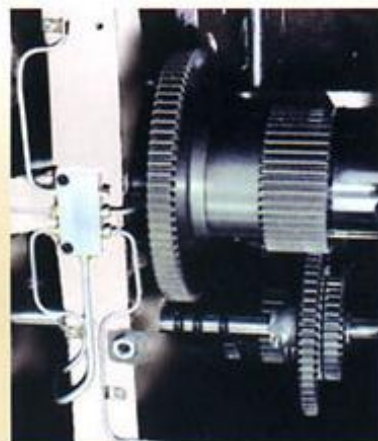
	FUL-660	FUL-760
SWING OVER BED	660mm (26")	760mm (30")
CENTER HEIGHT	330mm (13")	380mm (15")
SWING OVER CROSS SLIDE	310mm (12")	410mm (16")
DISTANCE BETWEEN CENTERS	1500/2000/2500/3000mm	
WIDTH OF BED	450mm (17.7")	
SPINDLE SPEEDS	30-2000 rpm	
SPINDLE NOSE	D1-11 (105mm)	
SPINDLE MOTOR	15KW (20HP)	



D1-11 (110mm)



Hardened & Ground Ways

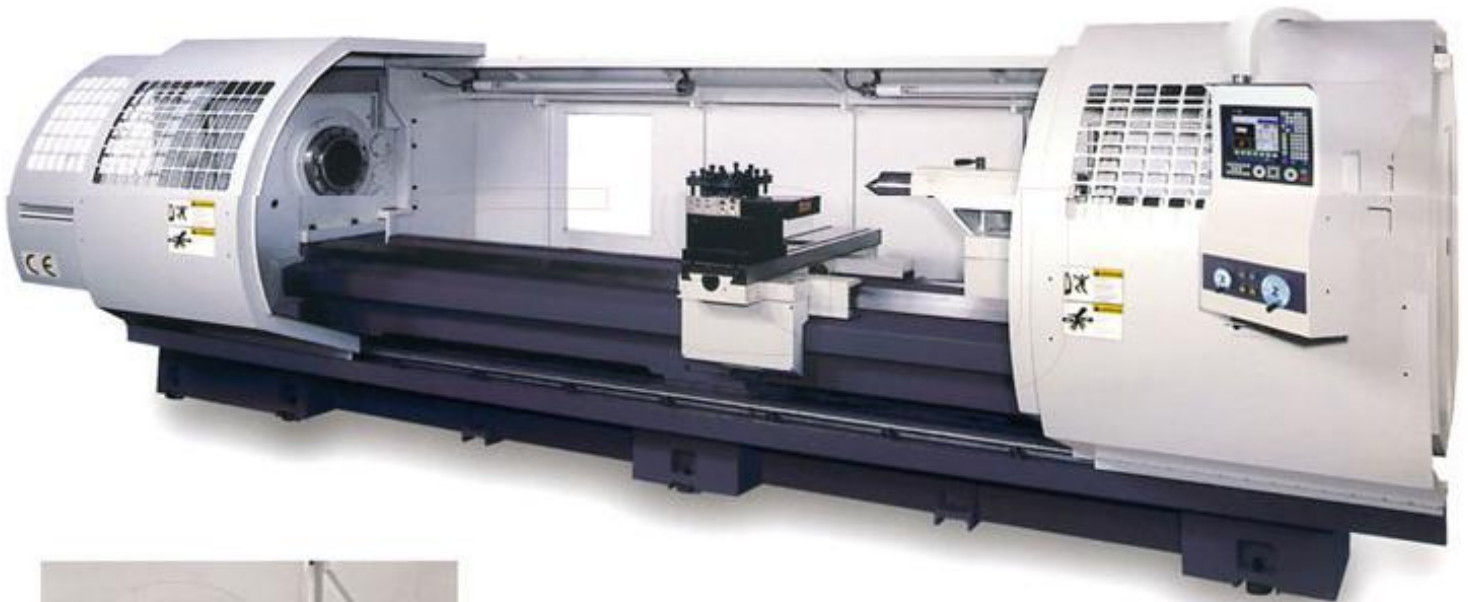


Heavy Duty Headstock

CNC Heavy Duty Lathe

FUL-1000

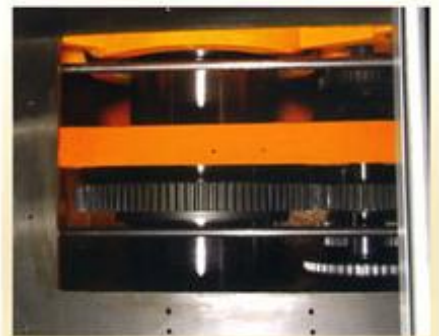
	FUL-900	FUL-1000
SWING OVER BED	800mm (31.5")	1000mm (39.4")
CENTER HEIGHT	400mm (15.7")	500mm (19.7")
SWING OVER CROSS SLIDE	510mm (20.1")	510mm (20.1")
DISTANCE BETWEEN CENTERS	1640/2140/3140/4140mm	
WIDTH OF BED	550mm (21.6")	
SPINDLE SPEEDS	4-600 rpm	4-400 rpm
SPINDLE NOSE	A2-15(250mm)	A2-20(380mm)
SPINDLE MOTOR	22KW (30HP)	



155mm (A2-11) 250mm (A2-15)
305mm (A2-20) 380mm (A2-20)



Hardened & Ground Ways



Heavy Duty Headstock

OPTIONAL ACCESSORIES [Other CNC controller is available on request]

OPTIONAL ACCESSORIES

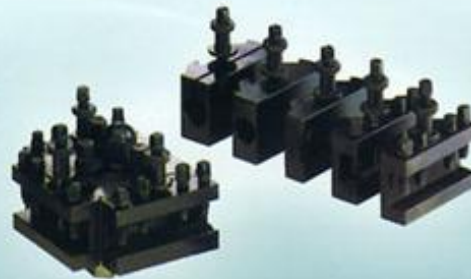
- 1 2 way quick toolpost
- 2 V8 8 Station Hydraulic Turret
- 3 Baruffaldi Electrome-chemical turret type TAN
- 4 4-jaw Independent Chuck
- 5 Automatic Hydraulic 4-Way Toolpost (H4)
- 6 Automatic Spindle Speed Change
- 7 Programmable Hydraulic tailstock
- 8 Steady rest
- 9 Follow rest
- 10 Chip conveyor
- 11 Full Guarding
- 12 8055TC LCD Color Monitor
- 13 CE
- 14 Double Chuck

STANDARD ACCESSORIES

- 1 FAGOR 800TGI 9" C.R.T
- 2 Coolant system
- 3 Auto lubrication
- 4 Work lamp
- 5 Safe guarding
- 6 Tools and tool box
- 7 One Door



L1. 2 way Quick Toolpost



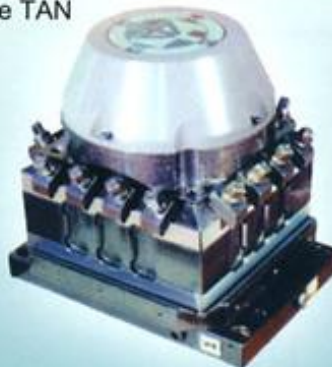
MODEL	TOOLPOST TYPE	LATHE CAPACITY	MT
FUL-380	JT-50	5" ~ 7" CENTRES	2
FUL-430/530/510	JT-55	7" ~ 10" CENTRES	3
FUL-560/660/760	JT-66	10" ~ 12" CENTRES	3
FUL-900/1000			

L2. V8 8 Station Hydraulic Turret



MODEL	SIZE	TOOL SECTION SQUARE	MT	Tools
FUL-510	LS-160	25	2	8
FUL-660/760	LS-160A	32	3	8
FUL-900/1000	LS-200	32	3	8

L3. Baruffaldi Electrome-chemical Turret Type TAN



MODEL	SIZE	TOOL SECTION SQUARE
FUL-430/530/510	TAN120/4PS	16mm
FUL-560/660/760	TAN160/4PS	20mm
FUL-900/1000	TAN210/4PS	25mm

L4. 4-jaw Independent Chuck



L5. Automatic Hydraulic 4-Way Toolpost (H4)



L6. Automatic Spindle Speed Change

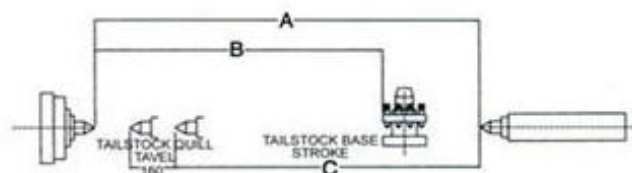


L7. Hydraulic Tailstock

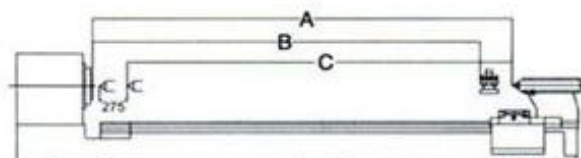


MODEL	FUL-510	FUL-660	FUL-760	FUL-900	FUL-1000
SWING OVER BED (RADIUS)	510 mm (20")	660 mm (26")	760 mm (30")	900 mm (35.4")	1000 mm (39.4")
CENTER HEIGHT	254 mm (10")	330mm (13")	380 mm (15")	450 mm (17.7")	500 mm (19.7")
SWING OVER CROSS SLIDE (DIA.)	295 mm (11.6")	430 mm (16.9")	530 mm (20.9")	600 mm (23.6")	700 mm (27.6")
DISTANCE BETWEEN CENTERS	840 mm (33")	1050 mm (41.3")		1140 mm (44.8")	
	1340 mm (52.8")	1550 mm (61")		2140 mm (84.3")	
	1890 mm (74.4")	2050 mm (80")		3140 mm (123.6")	
		3050mm (120")		4000 mm (157.5")	
WIDTH OF BED	330 mm (11.8")	450 mm (17.7")		550mm (21.6")	
HEADSTOCK					
SPINDLE BORE	ψ85mm	ψ105mm		ψ155 mm (6-800 rpm – 4 steps) (A2-11)	
SPINDLE SPEEDS	30~2000 rpm (3 steps)			ψ250 mm (4-600 rpm – 4 steps) (A2-15)	
SPINDLE NOSE	D1-8	D1-11		ψ305 mm (4-600 rpm – 4 steps) (A2-20)	
TAPER IN SPINDLE	MT 6#	MT 7#		ψ380 mm (4-400 rpm – 4 steps) (A2-20)	
SADDLE					
LONGITUDINAL TRAVEL (Z AXIS)	800 mm (31.5")	950 mm (37.4")		1030 mm (40.5")	
	1300 mm (51.2")	1450 mm (57.1")		2030 mm (80")	
	1850 mm (72.8")	1950 mm (76.8")		3030 mm (119.3")	
		2950 mm (116.1")		3830 mm (150.8")	
CROSS SLIDE TRAVEL (X AXIS)	380 mm (15")	410 mm (16.1")		550 mm (21.7")	
TAILSTOCK					
QUILL DIAMETER	75 mm (3")	85 mm (3.3")		105mm (4.1") / 125 mm (4.9") (OP.)	
TRAVEL	160 mm (6.2")	225 mm (8.8")		275 mm (10.8")	
TAPER	MT5#	MT5#		MT6#	
MOTOR					
SPINDLE MOTOR	7.5 KW (10 HP)	15 KW (20 HP)		22 KW (30 HP) 30 KW (40 HP) (OP.)	
BALLSCREWS FOR X & Z AXIS	X: 25 mm x pitch 5 Z: 40 mm x pitch 10	X: 25 mm x pitch 5 Z: 50 mm x pitch 10		X: 40 mm x pitch 5 Z: 63 mm x pitch 10	
DRIVES (X, Z AXIS)	DC SERVO AC SERVO (OP.)				
COOLANT PUMP MOTOR	1/8 HP (90 W) / 1/4 HP (180 W) (OP.)				
(X, Z AXIS) DRIVES					
MOTOR TORQUE	X: 2.1 NM Z: 4.5 NM	X: 4 NM Z: 12 NM		X: 12 NM Y: 22 NM	
RAPID TRAVERSE (X, Z AXIS)	X: 6M/min Z: 8M/min				
MACHINE NET WEIGHT	510 x 800: 2800 KG 510 x 1300: 3100 KG 510 x 1890: 3500 KG	660 x 950: 3150 KG 660 x 1450: 3750 KG 660 x 1950: 4250 KG 660 x 2950: 5300 KG	760 x 950: 3400 KG 760 x 1450: 4000 KG 760 x 1950: 4500 KG 760 x 2950: 5600 KG	900 x 1030: 4650 KG 900 x 2030: 5150 KG 900 x 3030: 6150 KG 900 x 3830: 7150 KG	1000 x 1030: 5200 KG 1000 x 2030: 5700 KG 1000 x 3030: 6700 KG 1000 x 3830: 7700 KG

□ Specifications subject to change without notice.



FUL-510 / FUL-660 / FUL-760 series



FUL-900 / FUL-1000 series

FULLAND MACHINERY CO., LTD.

Agent